

## City of Ljubljana January 2008

### Access restrictions and consolidation of delivery in Ljubljana

#### Context

In the City's Program of environmental protection, a great concern is given to traffic as an important polluter of air and an inducer of other emissions. The Freight transport contributes quite significantly to these emissions. Especially since Slovenia has joined the European Union an increase of freight traffic has been noticed on the motorway ring around the city. The access restrictions which were implemented in the city centre and in the broader city area within the motorway ring in year 2001 are not strictly obeyed and do not fully ensure efficient, sustainable and for citizens a friendly freight transport. There are several logistics centres in Ljubljana which are situated in different locations in the city and do not collaborate which causes a large number of transport operations and predictably lower load factor than would be possible.

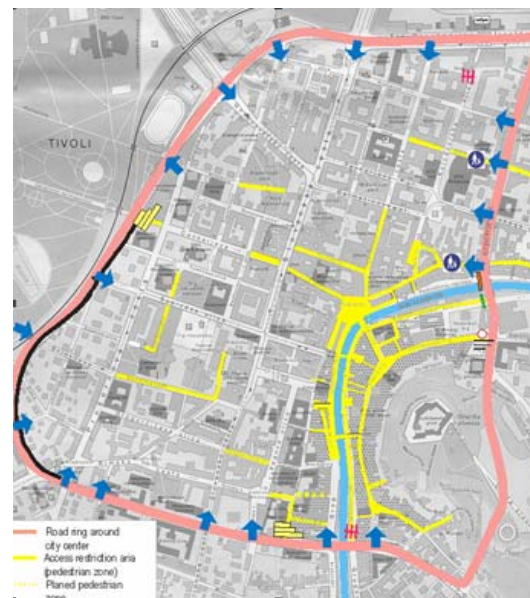
#### Objectives

The main goal of START activities in Ljubljana is to develop new solutions to improve the organization of goods distribution by identifying acceptable measures of access restrictions and incentives as well as possibilities for optimization of freight transport and distribution centres. New logistic concept will be identified by using experiences from other cities and a new sustainable city logistic system will be developed. The identified measures will be taken into consideration in order to achieve the best solutions for Ljubljana.

#### Description of the action

In cooperation with the City of Ljubljana, Prometni institut completed in year 2007 a study dealing with current problems of freight deliveries in the urban area, geographical characteristics of Ljubljana, existing and planned transport infrastructure, legislation analysis in the field of city logistics, identification of loading areas in Ljubljana, organisation of goods distribution in Ljubljana, identification of logistics services, goods flows identification. The second part of the study includes a comparative analysis of measures in other European cities and identification of best solutions and good practices. The comparative analysis is a

background for a proposal of new city logistics measures as a main part of the new logistics concept.



In workshop in Ljubljana (June 2007) problems relating to city were presented to project partners and stakeholders. Ljubljana received transfer of knowledge and experience from project partners and has been used as input for this work.

#### Further planning and expected results

In 2008 the proposed measures from study will be discussed by stakeholders in order to find the best solutions for improving freight transport situation in Ljubljana.

With preparation and presentation of the measures and considering new proposals a strategy for city logistics will be developed and the City council will be in position to implement the strategy.

#### Local partners

City of Ljubljana

Prometni Institut Ljubljana

#### Contact

For more information about START in Ljubljana:

[blaz.iemensek@prometni-institut.si](mailto:blaz.iemensek@prometni-institut.si) and [franc.mozina@ljubljanas.si](mailto:franc.mozina@ljubljanas.si)

For more information about START in Europe:

[Hakan.Perslow@trafikkontoret.goteborg.se](mailto:Hakan.Perslow@trafikkontoret.goteborg.se)