

## Access restrictions and consolidation schemes in Ljubljana

### Context

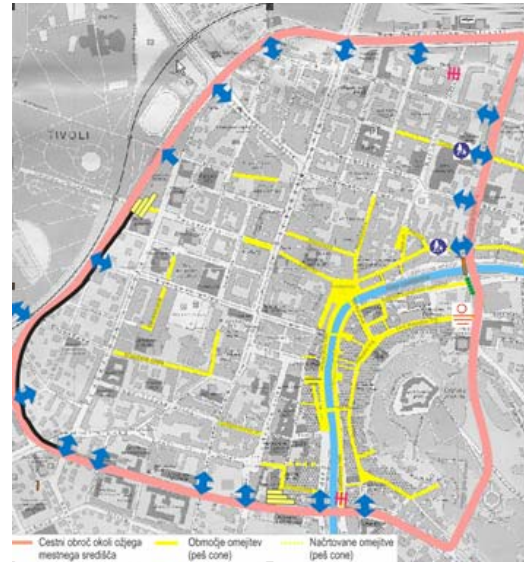
In the City's Program of environmental protection, a great concern is given to traffic as an important polluter of air and an inducer of other emissions. The Freight transport contributes quite significantly to these emissions. Especially since Slovenia has joined the European Union an increase of freight traffic has been noticed on the motorway ring around the city. The access restrictions which were implemented in the city centre and in the broader city area within the motorway ring in year 2001 are not strictly obeyed and do not fully ensure efficient, sustainable and for citizens a friendly freight transport. There are several logistics centres in Ljubljana which are situated in different locations in the city and do not cooperate which causes a large number of transport operations and predictably lower load factor than would be possible.

### Objectives

The main aim of START activities in Ljubljana is to develop new solutions to improve the organization of goods distribution by identifying acceptable measures of access restriction as well as possibilities for optimization of freight transport and distribution centres. New logistic concept will be identified by using experiences from other cities and a new sustainable city logistic system will be developed. The identified measures will be taken into consideration in order to achieve the best solutions for Ljubljana.

### Description of the action

In cooperation with the City of Ljubljana, Prometni institut prepared in year 2006 the analysis of current problems of freight deliveries in the urban area, which is part of the integrated study on access restrictions and on consolidation of deliveries. The analysis includes geographical characteristics of Ljubljana, existing and planned transport infrastructure, legislation analysis in the field of city logistics, identification of loading areas in Ljubljana, organisation of goods distribution in Ljubljana, identification of logistics services, goods flows and sorts of goods and identification of problems.



Information from Riga Workshop (June 2006) and Göteborg PMG (February 2006) brought transfer of knowledge and experience from project partners and have been used as input for this work.

### Further planning and expected results

In 2007 the comparative analysis of measures in other European cities and identification of best solutions for improvement of freight transport situation in Ljubljana will be prepared as a base for proposal of the new logistic concept. The proposal of the new concept will join proposals of access restriction regulation for deliveries to the city centre and the broader city area.

With preparation and presentation of the final report, a complete study containing the analysis of the current problems of city logistics will be developed in year 2008.

### Local partners

City of Ljubljana

Prometni Institut Ljubljana

### Contact

For more information about START in Ljubljana:

[blaz.jemensek@prometni-institut.si](mailto:blaz.jemensek@prometni-institut.si) and [milos.bajit@ljubljanasi](mailto:milos.bajit@ljubljanasi)

For more information about START in Europe:

[Sofie.vennersten@tk.goteborg.se](mailto:Sofie.vennersten@tk.goteborg.se)